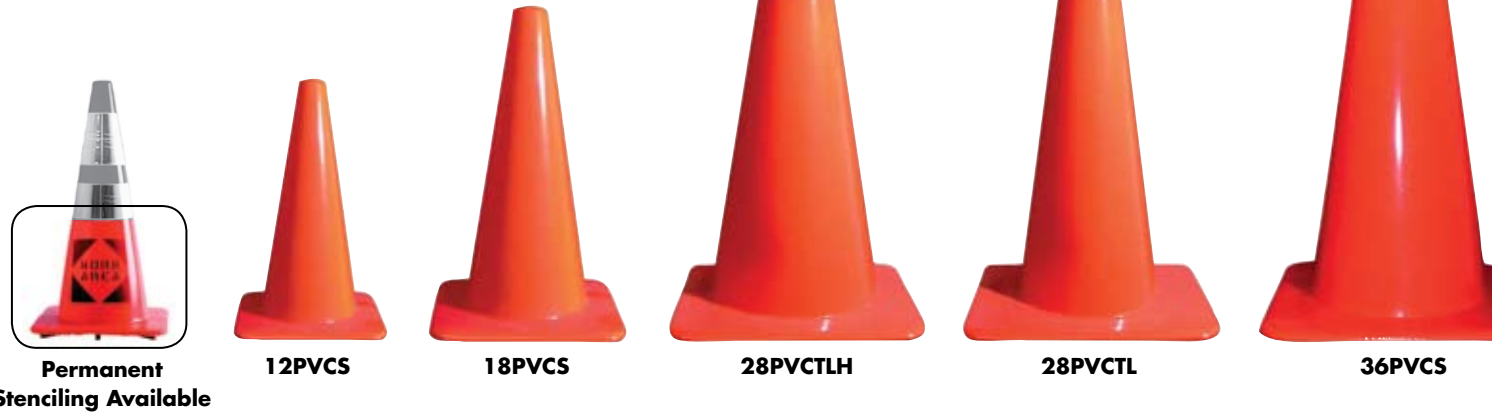


FLUORESCENT ORANGE TRAFFIC CONES

Tough enough for any work area. One-piece, flow-molded polyvinyl chloride, anti-fade fluorescent orange color with broad base for stability. Heat resistance to 160°. Elongation: 200%. Tensile strength: 1200 psi minimum. Hardness 80±5 conical, 75±5 base. Tear strength: 250 lbs. psi.

MODEL#	CONE HEIGHT	TOP THICKNESS	BOTTOM THICKNESS	WEIGHT LBS.	PER CRTN.
12PVCS	12"	.065"	.120"	1½	30
18PVCS	18"	.065"	.120"	3	20
28PVCTL	28"	.075"	.130"	5	10
28PVCTLH	28"	.080"	.135"	10	10
36PVCS	36"	.075"	.130"	10	10



Permanent Stenciling Available

12PVCS

18PVCS

28PVCTLH

28PVCTL

36PVCS

FLUORESCENT ORANGE CONE COLLAR SETS

Cone collars provide brilliant reflectivity and maximum durability. Meets all requirements of the MUTCD.

(Available for 28" and 36" Cones Only)

CONE COLLAR SETS

(6" UPPER AND 4" LOWER)

P/N	DESCRIPTION	FITS
6CC4C28S	28" Standard Cone Collar Set	28PVCTLH
6CC4C28T	28" Trimline Cone Collar Set	28PVCTL
6CC4C36S	36" Standard Cone Collar Set	36PVCS

6-INCH UPPER CONE COLLARS

P/N	DESCRIPTION	FITS
6CC28S	28" Standard Cone Collar	28PVCTLH
6CC28T	28" Trimline Cone Collar	28PVCTL
6CC36S	36" Standard Cone Collar	36PVCS

4-INCH LOWER CONE COLLARS

P/N	DESCRIPTION	FITS
4CC28S	28" Standard Cone Collar	28PVCTLH
4CC28T	28" Trimline Cone Collar	28PVCTL
4CC36S	36" Standard Cone Collar	36PVCS



28" SPRING CONE

SPACE SAVING SOLUTIONS FOR FIRST RESPONDERS AND TEMPORARY TRAFFIC CONTROL

- Compact for easy storage on any truck, or in vehicle trunk.
- Quickly deployed Spring Cone™ delineates traffic at any scene.
- Light weight and compact, cones weigh less and pack-up in a fraction of the space of traditional highway cones.
- Meets Federal M.U.T.C.D requirements for 28" reflective highway traffic cone.
- Plastic Tote holds 2 cones in less than 1 cubic foot.
- Cone is made of a durable, bright orange, flexible mesh material with a heavy duty rubber base.
- Flexible spring allows cone to automatically self deploy and spill wind for increased stability.
- Rubber base securely grips the road and holds cone in place in heavy traffic conditions.



MS21264-SCT
Two cone set with tote



MS21464-SCT
Four cone set with tote



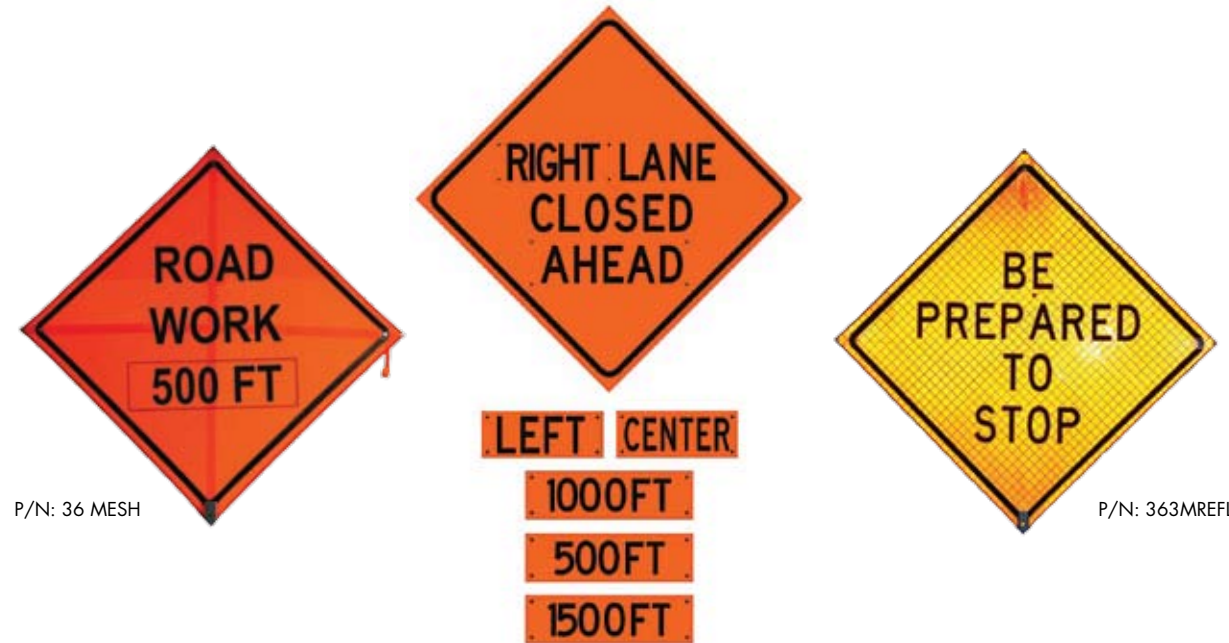
MS21664-SCT
Six cone set with tote



MS21064-SCT
Ten cone set with tote

SAFEZONE SERIES SIGN LEGENDS AND OVERLAYS

All SafeZone Series Signs are made of premium state of the art materials. We offer our new fade resistant mesh, which is a daytime only product as well as 3M High Intensity reflective material for night time. Corner Pockets come standard on each sign along with a heavy-duty polyglass sign frame, anti-kiting device, hook and loop tie strap for storage. All SafeZone Series roll-up signs conform to the Manual on Uniform Traffic Control Devices (MUTCD) and are NCHRP-350 tested and certified.



ADD MESSAGE NUMBER TO PART NUMBER WHEN ORDERING

NO #	MESSAGE	NO #	MESSAGE	NO #	MESSAGE
A0010	ARROW (REVERSIBLE)	M0451	MERGE RIGHT SYMBOL	U0895	UTILITY CONSTRUCTION AHEAD
B0000	BLANK MATERIAL (NO LEGEND)	M0452	MERGE LEFT/RIGHT SYMBOL (COMBO)	U0896	UTILITY CONSTRUCTION 500 FT
B0025	BORDER ONLY	M0460	MOWERS AHEAD	U0897	UTILITY CONSTRUCTION 1000 FT
B0055	BE PREPARED TO STOP	M0470	MOWING AHEAD	U0898	UTILITY CONSTRUCTION 1500 FT
B0070	BEGIN MOWING ZONE	O0500	ONE LANE CLOSED AHEAD	U0915	UTILITY WORK AHEAD
B0090	BUMP AHEAD	O0510	ONE LANE ROAD AHEAD	U0916	UTILITY WORK 500 FT
C0120	CHILD SAFETY SEAT CHECK AHEAD	R0600	RIGHT LANE CLOSED AHEAD	U0917	UTILITY WORK 1000 FT
C0150	CONSTRUCTION AHEAD	R0610	RIGHT SHOULDER CLOSED	U0918	UTILITY WORK 1500 FT
D0180	DETOUR AHEAD	R0629	ROAD CLOSED	W0945	WORK AREA AHEAD
E0195	END CONSTRUCTION	R0630	ROAD CLOSED AHEAD	W0961	WORKERS AHEAD
E0215	END MOWING ZONE	R0635	ROAD CONSTRUCTION AHEAD	W0975	WORKERS SYMBOL
E0225	END ROAD ZONE	R0646	ROAD CONSTRUCTION 500 FT	500	500 FT
E0235	END UTILITY WORK	RP647	ROAD CONSTRUCTION 1000 FT	1000	1000FT
F0275	FLAGGER AHEAD	R0648	ROAD CONSTRUCTION 1500 FT	1500	1500FT
F0305	FLAGGER SYMBOL	R0675	ROAD WORK AHEAD	2000	2000FT
F0320	FLAGMAN AHEAD	R0676	ROAD WORK AHEAD 500 FT	1/4	1/4
F0330	FREE CAR SEAT CHECK	R0677	ROAD WORK AHEAD 1000 FT	1/2	1/2
F0335	FRESH OIL	R0678	ROAD WORK AHEAD 1500 FT	3/4	3/4
L0350	LANE CLOSED AHEAD	S0690	SHOULDER WORK AHEAD	1 MILE	1 MILE
L0380	LANE ENDS MERGE LEFT	S0725	STREET CLOSED	ONE	ONE
L0385	LEFT LANE CLOSED AHEAD	S0726	STREET CLOSED AHEAD	LEFT	LEFT
L0395	LITTER PICK UP AHEAD	S0765	SURVEY CREW AHEAD	RIGHT	RIGHT
M0425	MEN WORKING	T0825	TREE WORK AHEAD	CENTER	CENTER
M0450	MERGE LEFT SYMBOL	T0865	TRUCKS ENTERING HIGHWAY	REV. ARR	ARROW
				BAR	BAR (FOR LEFT/RIGHT MERGE)

The **SafeZone Series SZ-412-S** is the single spring-loaded version of our popular SZ-412. The single coil spring adds additional weight and redundancy to compensate for increased wind loads. The SZ-412-S is primarily used along the sides of state highways and interstates where wind loads are greater and more frequent.

COMPACT AND LIGHTWEIGHT

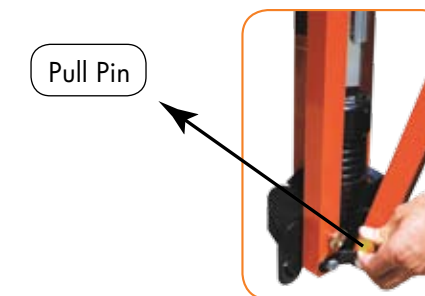
SafeZone Series Sign Stands are lightweight and require minimum space in your vehicle. They are easy to carry for setup and deployment of your roll-up signs.



SZP-BAG-24 for SZ-412 and SZ-412/S

STAND CARRYING BAGS

All SafeZone Series Stand Storage Bags are made of a heavy-duty fabric to help protect your stand when stored. The bags are mildew and rot-resistant and are designed to prolong the life of your stand.



Pull Pin

PULL PIN/KICK RELEASE LEVERS

The dual Pull Pin/Kick Release lever allows each leg to be deployed by either pulling the pin by hand or by stepping on the kick release.



Kick Release Lever

SAFEZONE SERIES SZ-412 SPRINGLESS SIGN STAND

The SafeZone Series SZ-412 is a super lightweight compact springless sign stand for use with roll-up signs. Easy to use and easy to store, it's single sign attachment point allows for quick deployment in the field. Telescopic legs with both pull pin and kick release levers can be released by hand or foot for fast set-up. Legs have three height adjustments for use on uneven terrain, making it easy for use along right of ways and medians.

The right choice for Utility Companies, DOT's, City and County Governments or anyone working along secondary roads or inner city streets.



AUTO-LATCH

Patented corner pocket snaps quickly into Auto-Latch. The easy release lever makes it simple to remove the sign. The Auto-Latch Bracket is standard on all of our Sign Stands except when Universal Bracket is requested.

